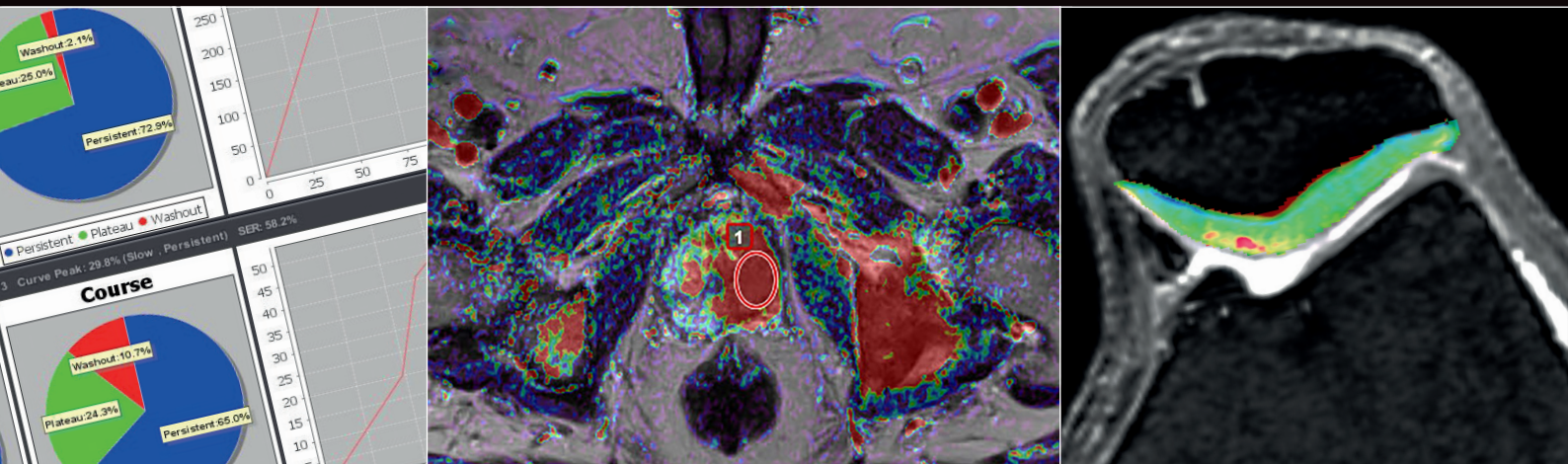


# BODY PACKAGE



Our Body package is your complete solution to manage oncology and MSK disorders from daily routine practice to more-in-depth analysis and measurements.

# INCLUDED CONTENT

## Diffusion: automatically computes diffusion maps

Automatic presets: motion correction | noise reduction | background segmentation  
Automatic computed maps: ADC | Isotropic | Exponential  
Customizable configuration: spatial smoothing

## IVIM: automatically quantifies micro-perfusion with diffusion only

Automatic presets: motion correction | noise reduction | background segmentation  
Automatic computed maps: ADC | D | D\* | F  
Customizable configurations: computation model | bayesian method | max/min values

### computes non-acquired diffusion b-values

Automatic presets: motion correction | noise reduction | background segmentation  
Computed maps: computed b-value | user can set multiples b-values without limitation  
Customizable configurations: computation model | max/min values

## Permeability: automatically and accurately computes qualitative & quantitative maps

Automatic presets: motion correction | AIF | baseline | noise reduction | background segmentation  
Automatic qualitative computed maps: Washin | Washout | Peak | SER | AUC | TME | Peak enhancement | Curve washout  
Automatic quantitative computed maps: Ktrans | Kep | VE | VP  
Customizable configurations: DCE models | early signal index | downsampling | relaxivity | spatial smoothing | hematocrit

## Collage: Stitching & binding tool

Whole-body spine | Lower limb angios | whole-body oncology  
Creation of unique volume from multi-volumes or multi-stations b scan

## Analysis MR: quick assessment of full dataset

Visualization: 2D, 3D | fusion | MPR  
Dedicated reports: PI-RADS v1 or v2  
Assessment: ROI | VOI segmentation | measures  
Communication: key images | screen captures | export to PACS | export to .csv file

# CLINICAL SPECIALTIES COVERED

Women's health	Prostate	Rectum	MSK
Breast Streamlined Breast Streamlined_BS Breast Expanded Female Pelvis	Prostate Streamlined Prostate Expanded	Rectum Streamlined	MSK Onco/Inflammatory

# REQUIREMENTS

## System & Software Requirements

<b>Operating System</b>	Windows Desktop (x64): 7 / 8.1 / 10 Windows Server (x64): 2008 / 2008 R2 / 2012 / 2012 R2 / 2016
<b>Software</b>	Microsoft Visual C++ 2012 Redistributable (x64) Microsoft Visual C++ 2015 Redistributable (x64) PDF Reader

## Stand-alone

<b>CPU</b>	Intel® Core / i7 / Xeon processor with 4 cores at 3.0+ GHz or 6 cores at 2.4+ GHz supporting SSE4.2 instructions
<b>Memory</b>	24 GB
<b>GPU</b>	Graphic card with at least the technical specs below: - Memory Type : GDDR5 - Core Clock Speed : 1500MHz - Memory Clock Speed : 8000MHz  Compatibles GPU Series: - Nvidia GeForce (Series Kepler, Maxwell, Pascal, Turing) - AMD ATI (Series Radeon Rx)
<b>Storage</b>	150 GB / SSD Drive
<b>Network</b>	1 Gb Ethernet port

## Server

<b>CPU</b>	Intel® Core i7 / Xeon processor with 4 cores at 3.0+ GHz or 6 cores at 2.4+ GHz supporting SSE4.2 instructions
<b>Memory</b>	12 GB
<b>Storage</b>	300+ GB / SSD Drive
<b>Network</b>	1 Gb Ethernet port

## Thick client

<b>CPU</b>	Intel® Core / i7 / Xeon processor with 4 cores at 3.0+ GHz or 6 cores at 2.4+ GHz supporting SSE4.2 instructions
<b>Memory</b>	32 GB
<b>GPU</b>	Graphic card with at least the technical specs below: - Memory Type : GDDR5 - Core Clock Speed : 1500MHz - Memory Clock Speed : 8000MHz  Compatibles GPU Series: - Nvidia GeForce (Series Kepler, Maxwell, Pascal, Turing) - AMD ATI (Series Radeon Rx)
<b>Storage</b>	5 GB
<b>Network</b>	1 Gb Ethernet port

Note: Olea Sphere® 3D rendering is not optimal with Nvidia Quadro Series.

## OLEA MEDICAL®

ZI Athelia IV - 93, avenue des Sorbiers  
13600 La Ciotat - FRANCE  
PH +33 4 42 71 24 20 - FX +33 4 42 71 24 27  
[www.olea-medical.com](http://www.olea-medical.com)

Olea Sphere® v3.0 and breastscape® v1.0, medical imaging post-processing software, are medical devices manufactured and marketed by Olea Medical®. These medical devices are reserved for health professionals. These software programs have been designed and manufactured according to the EN ISO 13485 Quality management system. Read the instructions in the notice carefully before any use. Instructions for Use are available on <http://www.olea-medical.com/en/>

Manufacturer: Olea Medical SAS (France). Medical devices Class IIa / Notified body: CE 0459 GMED.

**IMPROVED  
DIAGNOSIS  
FOR LIFE**